

Assembling

If the Stabilizer Arm is resting on the rim of the Juice Container follow steps 1-2:

1. Remove the Stabilizer Arm from the Plunger Rod by lifting straight up.



2. Set the Stabilizer Arm aside.



If the Plunger is not already positioned in the Juice Container follow steps 3-5:

3. Place the Juice Container on a hard surface with the label facing the operator.



NOTE: Make sure the Plunger Rod is tightened against the Plunger Plate. If Plunger Rod is loose, turn the rod to the right to tighten into place.

4. Grasp the Plunger Rod with both hands and match the largest hole in the Plunger Plate to the largest Guide Post protruding upward from the bottom of the Juice Container.

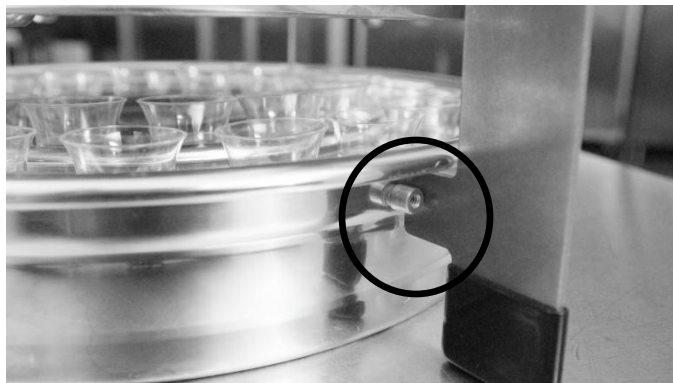


5. Lower the Plunger over the Guide Posts.

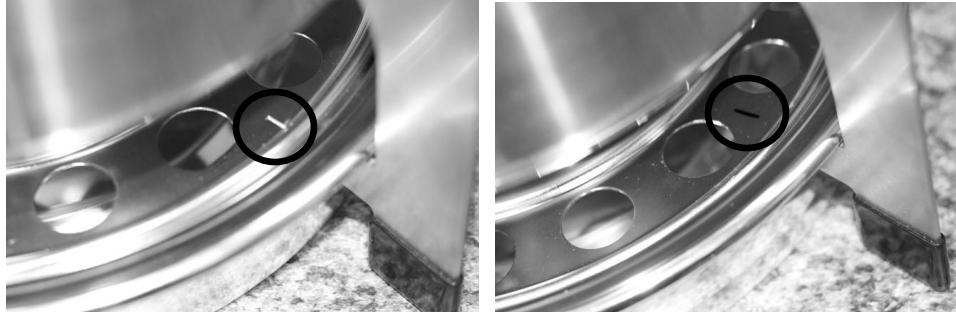


After the Plunger is positioned in the Juice Container:

6. To position the communion tray filled with cups under the Juice Container, slide the tray through one of the side openings.
 - a. If using the *Permanent Communion Tray Alignment Solution* pull the tray against the two front Legs and spin the tray counter clockwise until the tray locks against the Guide Leg.



- b. If using the *Permanent Communion Insert Marking Solution* or the *Recurring Communion Insert Marking Method* pull the tray against the two front Legs and turn the tray until the mark on the insert lines up with the Guide Leg.



NOTE: Because there will be drips, a communion tray filled with cups should be positioned under the Juice Container at the beginning of the assembling process and removed from under the Juice Container after communion preparation is completed.

7. Set the Power Box next to the Juice Container with the label facing the operator.



8. Plug the Rechargeable Battery into the Power Box battery hole. DO NOT apply much force.
When the Rechargeable Battery is properly connected, the Timer will turn on.



NOTE: Refer to *Setting the Timer* on pages 32-34 if the timer does not read 0 1 S 1 0. ALWAYS verify that the Timer is set on S WITHOUT an underline.



9. Hold the Stabilizer Arm in left hand with thumb against the Plug.



10. With right hand insert the Power Cord into the Plug on the Stabilizer Arm.



NOTE: Performing the power connection steps out of order may cause dripping or dispensing to occur if there is liquid in the Juice Container.

11. With both hands gently lower the Stabilizer Arm onto the Plunger Rod until the Arm rests on the rim of the Juice Container.



12. Pour the liquid into the Juice Container in the opening opposite of the Power Cord making sure that no liquid is poured over the Stabilizer Arm. Fill until the liquid is within the Fill Range, between the top and bottom screws. As covered in *Setting the Timer* on pages 32-34, the amount of liquid in the Juice Container controls the rate of the flow of liquid. Keep the liquid level between the top and bottom screws while the System is in use.

